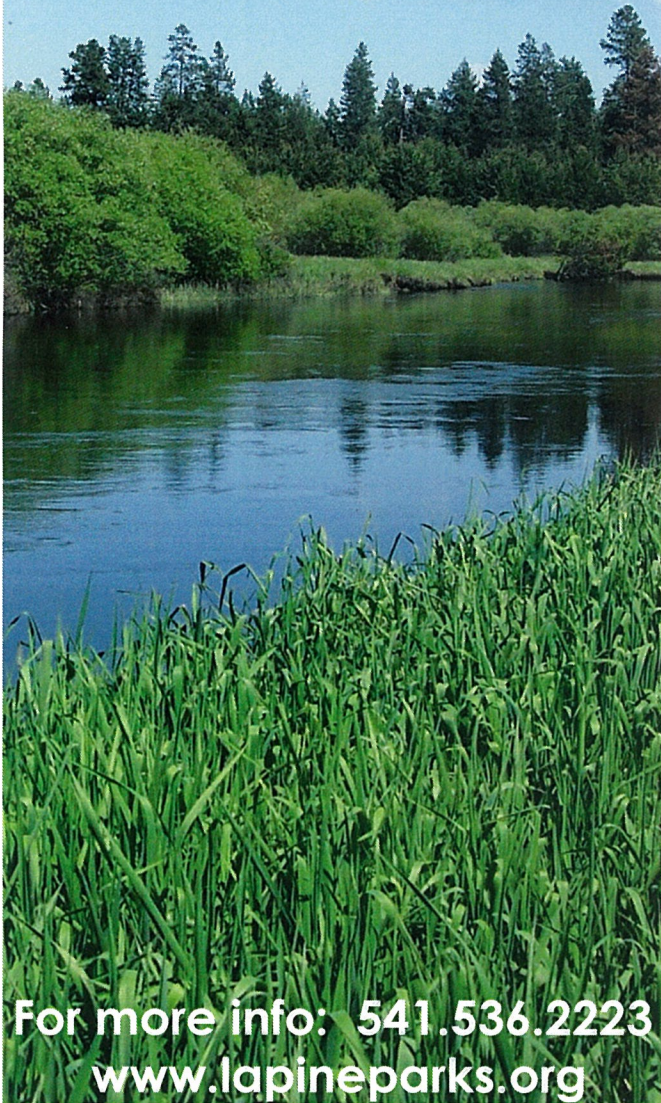


# Rosland Campground & Day Use Area

La Pine Park & Recreation

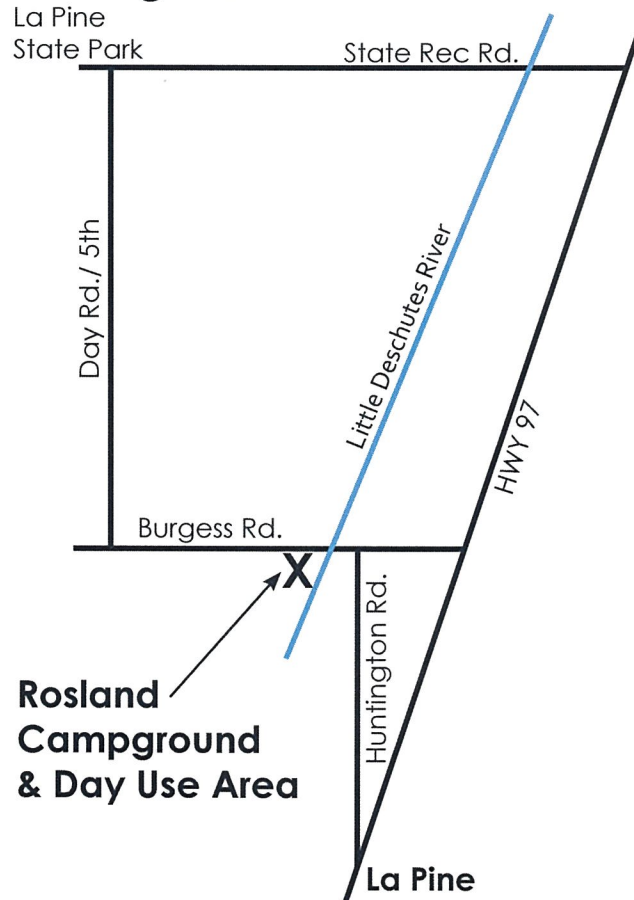


For more info: 541.536.2223  
[www.lapineparks.org](http://www.lapineparks.org)

## Getting there:

La Pine

State Park



Rosland  
Campground  
& Day Use Area

## About the Campground:

A tranquil campground with riverfront access on the Little Deschutes River. Central location to Wickiup Reservoir, Davis Lake, Newberry National Monument, Three Sisters Wilderness and the Cascade Lakes Highway. All within a 45 minute drive. Rosland Campground & Day Use Area, a great place to stay and play.

- On site camphost
- 10 dry campsite
- 1 with water & electricity
- Fire pits and picnic tables at all the sites
- Water on site
- Pit toilet
- Firewood for sale
- Walking trail
- River Front Access
- Fishing
- Canoeing

For more info: 541.536.2223 or [www.lapineparks.org](http://www.lapineparks.org)